

BDD-08-15 Series



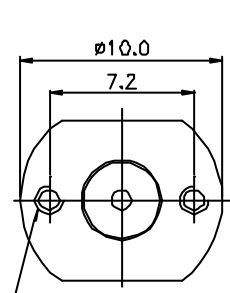
- DC Brush Motor
- Designed for high volume applications
- Up to 8.6 g-cm of Torque
- 8 mm diameter
- Custom versions are available

Specifications

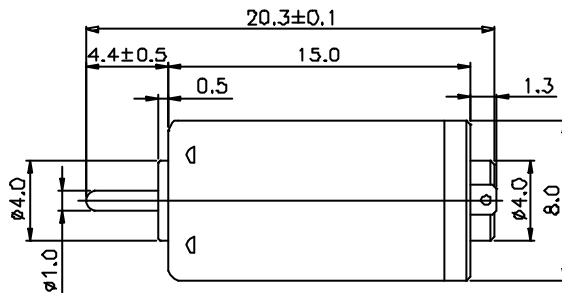
Model Number	Voltage		No Load		At Maximum Efficiency					Stall Torque (g-cm)
	Operating Range (Volts DC)	Nominal (Volts DC)	Speed (RPM)	Current (Amps)	Speed (RPM)	Current (Amps)	Torque (g-cm)	Output (Watts)	Eff. (%)	
BDD-08-15-3.0V-15200	2.0 – 3.0	3.0	15,200	0.045	11,820	0.16	1.70	0.21	43.0	7.6
BDD-08-15-2.4V-15800	1.2 – 3.5	2.4	15,800	0.056	12,410	0.20	1.80	0.23	47.7	8.6
BDD-08-15-2.0V-8000	2.0 – 4.0	2.0	8,000	0.025	6,020	0.08	0.96	0.06	37.0	3.9
BDD-08-15-1.5V-20000	1.5 – 3.5	1.5	20,000	0.120	13,500	0.43	2.00	0.28	43.4	6.2

DIRECTION OF ROTATION

UNIT: MILLIMETERS



ISO 1.4x0.3 TAPPED HOLE
2 PAGES



WEIGHT: 4g (APPROX)

